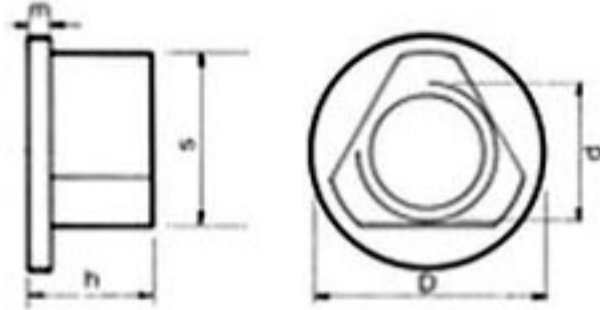


# DIN - 22425

## TUERCAS TRIANGULARES



d	D	S	h	m	Weights in Kg per 1000 pieces.		Packagiag
					Steel	Brass	
M4	8,5	6,5	5	2	1,31	1,42	
M5	10	8	6	2	2,04	2,21	
M6	12	9,75	6,5	2	3,26	3,54	
M8	15	11,75	8,3	2,3	5,55	6,02	
M10	18	14,5	10,3	2,8	10,20	11,10	
M12	28	20	15	3,5	33,60	36,40	